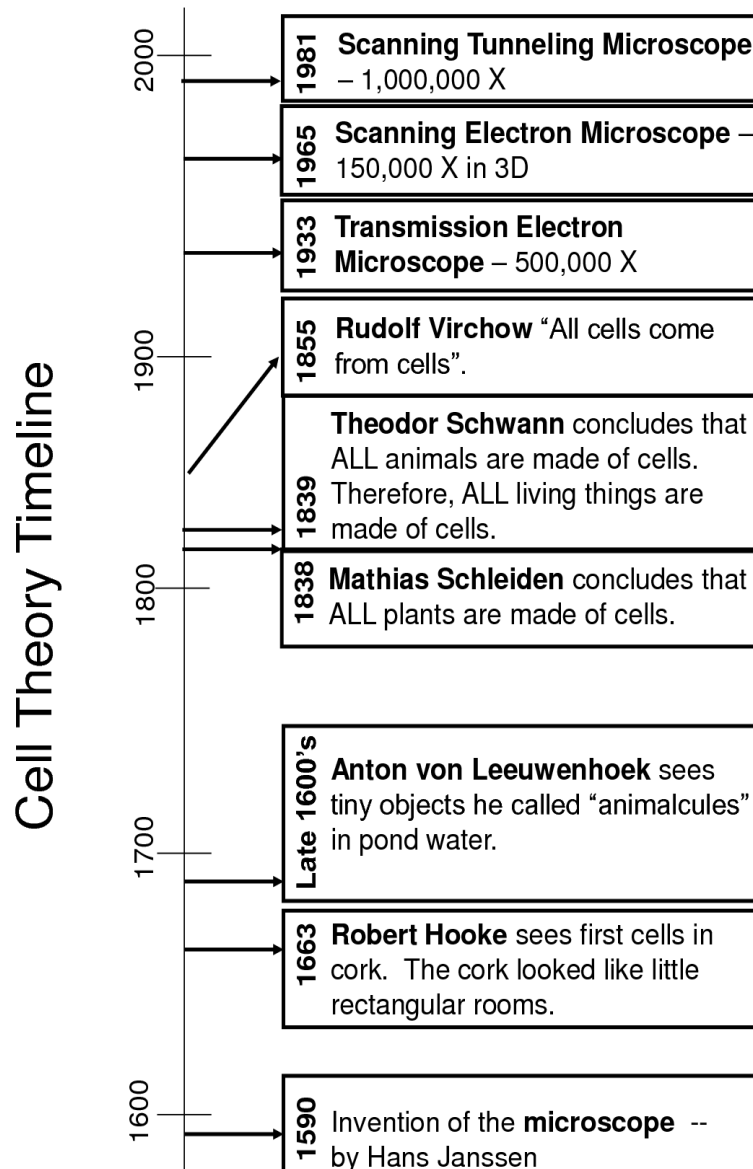


Development of THE CELL THEORY

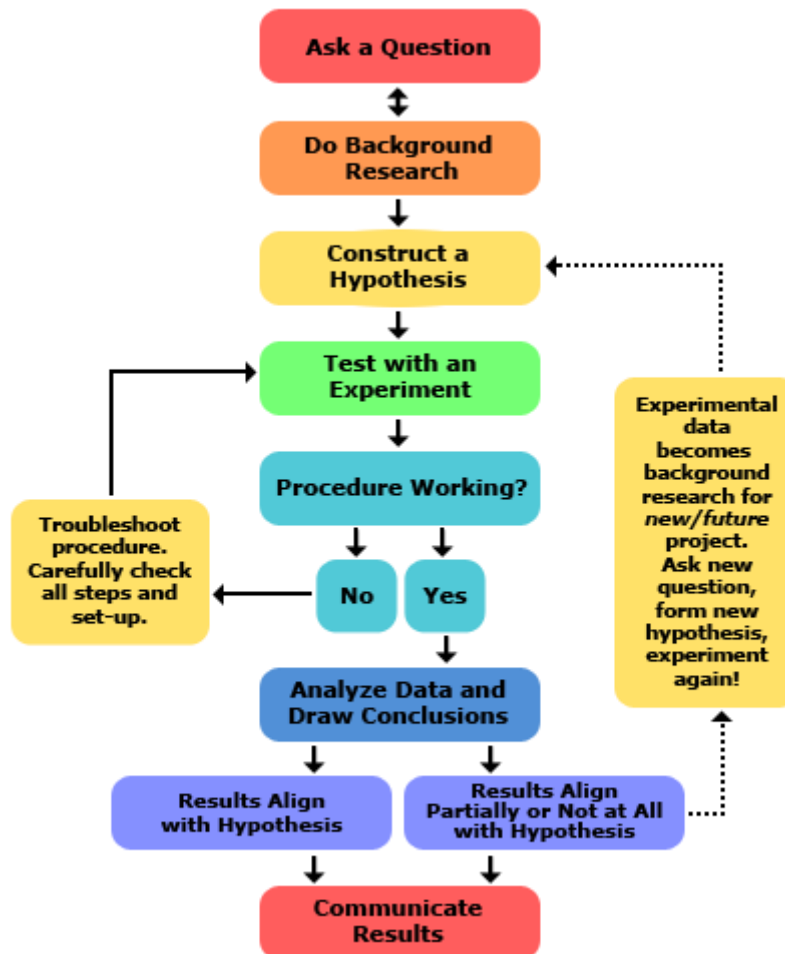


The following is known as the *cell theory*:

1. All organisms are comprised of cells (Schleiden: plants; & Schwann: animals, 1838)
2. The cell is the basic structure in all living things (Schleiden: plants; & Schwann: animals, 1838)
3. All cells come from pre-existing cells (Virchow, 1858)

Experiment # 1

The following diagram is known as the *scientific method*:



YOUR TASK:

Design and execute an experiment that strictly adheres to the “scientific method,” including a question, research, a hypothesis, a test with observable/measurable data, a conclusion that supports or refutes your hypothesis, improvements/suggestions and a summary.

You must either:

- a) Add to the body of evidence that supports the cell theory

Or

- b) Disprove the cell theory